

The Western Australian Rogaining Association presents the

Western Australian Rogaining Association
PO Box 1201, Subiaco, WA 6904

wa.rogaine.asn.au








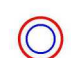

Old Man Emu 12 hr Autumn Rogaine 16th April 2011

Incorp' Paddy Pallin Junior Cadet Challenge

Paddy Pallin



LEGEND

- Control 
- Contours 
- Hash House 
- Magnetic North Line 
- Road, Gravel 
- Track 
- Watercourse 
- Waterdrop 
- Patrolled Roads 

SCALE 1:50,000, 5 metre contour interval

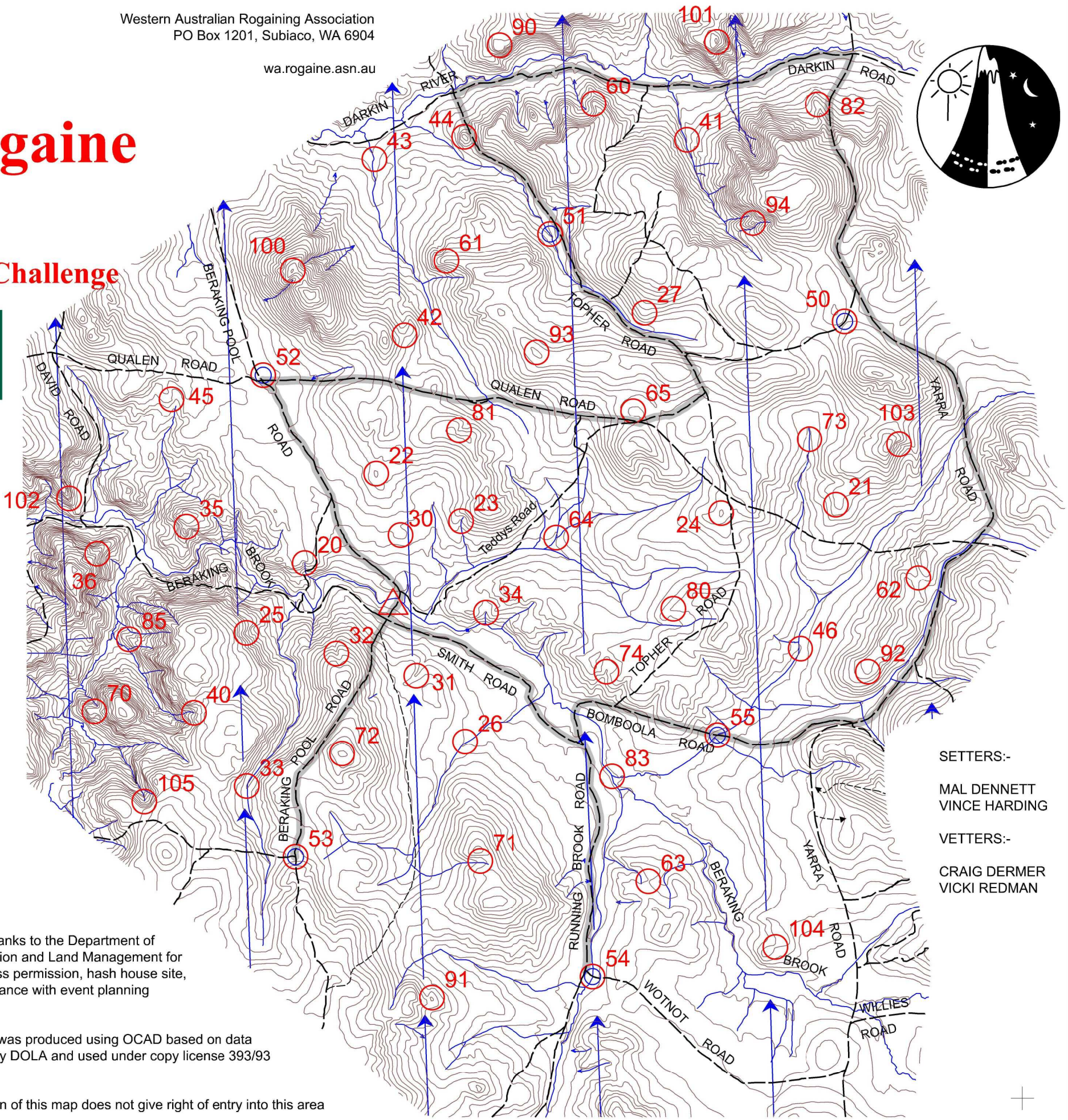


WARA receives financial support from Sport and Recreation WA.

Special thanks to the Department of Conservation and Land Management for land access permission, hash house site, and assistance with event planning

This map was produced using OCAD based on data supplied by DOLA and used under copy license 393/93

Possession of this map does not give right of entry into this area



- SETTERS:-
MAL DENNETT
VINCE HARDING
- VETTERS:-
CRAIG DERMER
VICKI REDMAN

WARA 12 Hour **Old Man Emu** Rogaine Incomp 2011 Paddy Pallin Junior Cadet Challenge - 16th April 2011

No.	Description	Points	No.	Description	Points	Important Information
20	The Gully – Head of	20	60	The Spur	60	Control Cards
21	The Spur	20	61	The Spur	60	
22	The Knoll – Broad	20	62	The Saddle	60	0930 Sat (9:30am)
23	The Watercourse – Head of	20	63	The Saddle	60	Briefing
24	The Knoll	20	64	The Watercourse	60	
25	A Watercourse – Head of	20	65	A Knoll	60	0945 Sat (9:45am)
26	The Watercourse	20				Start
27	The Spur	20	70	The Saddle	70	
			71	The Watercourse	70	1000 Sat (10:00am)
30	The Knoll – Broad	30	72	The Summit – Broad	70	Finish
31	The Gully	30	73	The Watercourse	70	
32	The Gully	30	74	The Gully	70	2200 Sat (10:00pm)
33	The Watercourse – Shallow	30				Hash House
34	The Watercourse – Head of	30	80	The Spur	80	
35	The Saddle	30	81	The Gully – Head of	80	1600 Sat (4:00pm)
36	A Saddle	30	82	The Spur	80	Sunset
			83	The Watercourse Junction	80	
40	The Watercourse _ Head of	40	85	The Spur	80	1854
41	A Watercourse Junction	40				Moonrise
42	The Saddle	40	90	The Summit	90	
43	The Watercourse Bend	40	91	The Knoll	90	1721
44	The Knoll	40	92	The Spur	90	Moonset
45	A Knoll – Rocky	40	93	The Knoll – Broad	90	
46	The Watercourse – A Bend	40	94	The Knoll	90	0512
50	The Saddle – Broad : Water	50	100	The Summit	100	Late Penalty
51	The Watercourse & a Track Junction – Water	50	101	The Summit	100	
52	A Pine Plantation – South/West corner – Water	50	102	The Spur – Rocky	100	10 points per minute or part minute.
53	The Track Junction – Water	50	103	The Gully	100	LATE (no points) later 10:30pm Sat 16 th April
54	The Watercourse / Track Junction – Water	50	104	The Saddle	100	Controls Used
55	The Watercourse / Track Junction – Water	50	105	The Watercourse – Head of	100	
						55
						Total Points
		950			2160	3110
Water Drops: At Controls 50, 51,52, 53, 54, 55 If you are injured please make your way to a water drop or a patrolled road and wait there for help.			Patrolled Roads. See roads indicated on the map:			